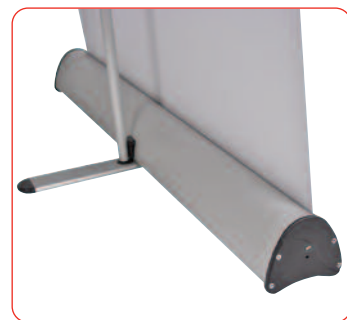




A lightweight economy roller banner with slim base and bungee pole making it very compact, complete with a twist out foot for extra stability.

features & benefits

- Lightweight components
- Re-usable quick-change snap top rail
- Hook/loop fastening quick change graphic application
- Twist out stabilising foot for extra stability
- Anodised silver colour base
- 1000mm graphic width
- Includes quality padded carry bag



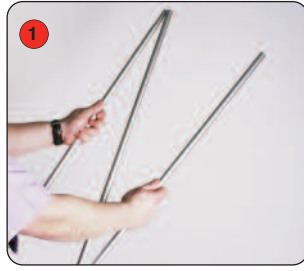
hardware specifications	graphic specifications	additional info
<p>Hardware Dimensions (mm): 2110 (h) x1030 (w) x 445 (d) approx. 83.10" (h) x 40.55" (w) x 17.52" approx. (Depth dimension refers to twist out foot)</p> <p>Weight: 2.5kg (5.5lbs) approx (including carry bag)</p>	<p>Total Visual Graphic Area: 1000x2010mm</p> <p>Include 150mm at bottom (non-visible image area in roll mechanism).</p>	<p>Included in kit: Top rail, base, bungee pole set and carry bag</p> <p>Recommended accessories: AG720C Low profile hook fastener (25m roll)</p>

Assembly Instructions

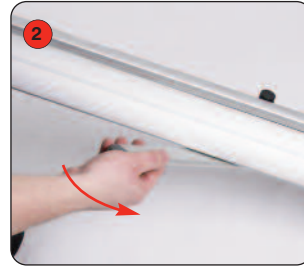
Banner stand assembly



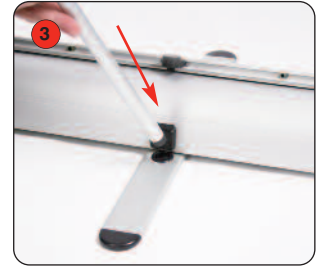
Kit includes: Top rail, base, bungee pole set and carry bag



1 Assemble the bungee pole set.



2 Open out the stabilising foot.



3 Fit the bungee pole into the stabilising foot.



4 Lift the top rail to raise the graphic from the base.



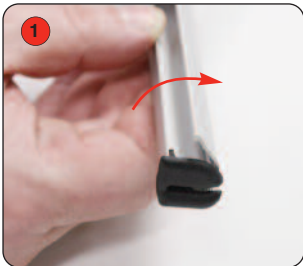
5 Lean the banner stand backwards and continue to extend the graphic.



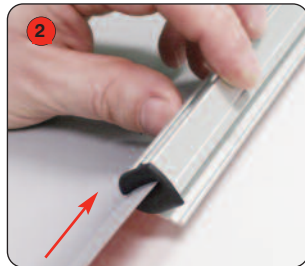
6 Secure the top rail cup onto the bungee pole.

Hold the Top rail whilst lowering the banner, (do not drop) to prevent damage to the graphic.

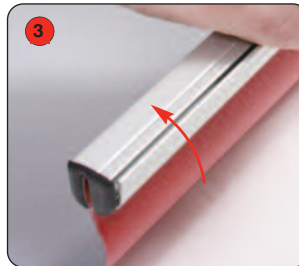
Graphic attachment instructions



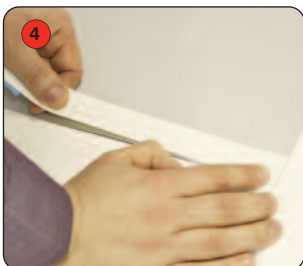
1 Rotate open the snap rail.



2 Slide the graphic squarely into the rail.



3 Squeeze the snap rail shut to secure the graphic into place



4 Align and adhere hook fastener squarely to the bottom shorter edge of the graphic. (attach to back of graphic)



5 Securely attach the graphic to the loop fastener on the banner leader strip.



6 Whilst holding the top rail remove the locking pin from the base and gently allow the graphic to retract.

After fitting, the graphic should be left for 24 hours before use, to ensure the adhesive bonds sufficiently.



Note: Opening the banner stand base may invalidate the product warranty.